



WARNING:

THIS DEVICE IS NOT INTENDED FOR USE WITH EMERGENCY EXITS
ADDED WEIGHT OF THE DEVICE MAY CAUSE INSTABILITY OF A
FREE-STANDING PORTABLE LUMINAIRE
USE ONLY WITH A PORTABLE TABLE LUMINAIRE THAT IS
PROVIDED WITH A SHADE

Avertissement:

NE CONVIENT PAS AUX SORTIES DE SECOURS
LE DISPOSITIF CONSTITUE UN POIDS SUPPLÉMENTAIRE CE QUI
PEUT CAUSER
L'INSTABILITÉ D'UN LUMINAIRE PORTATIF AUTONOME
UTILISER UNIQUEMENT AVEC UNE LAMPE DE TABLE DOTÉE D'UN
ABAT-JOUR
USAR EN LÁMPARAS DE MESA PORTÁTILES EN
DONDE LA DISTANCIA DESDE LA PARTE INFERIOR DE
LA BASE A LA PARTE SUPERIOR DEL
PORTALÁMPARAS NO DEBE EXCEDER TRES VECES
EL DIÁMETRO MÍNIMO DE LA BASE



Do not use this LED lamp with an electric generator.
Please avoid using the led fixture in environment where there is smoke,
sulfur, and corrosive substances. But if used in such environment,
make sure the led fixture is well protected by an enclosed lampshade
with dimension no less than below size, and materials made up of glass,
semi-glass, or semi-metallic.

Maximum Power (W)	60/90/100	120/140/160
Volume (Inches)	14.2*14.2*13.8	15.8*15.8*13.8

PARTS/COMPONENTS, INCLUDED IN KIT

- Installation Instruction
- Security Rope
- LED Lamp

Product features:

- ◆ 100 degree lighting, UGR<30.
- ◆ Single CCT or CCT adjustable optional.(PLT-12950 and PLT-12951 are CCT adjustable.)
- ◆ Motion microwave sensor or motion PIR sensor optional,
0-10V continuous dimming.
- ◆ Two dimming modes optional: wattage selection , sensor dimming.
- ◆ Pure aluminum fins heatsink, no fans.
- ◆ Internal driver, input voltage AC120-277V.

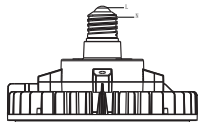


- ◆ Potted driver for improved heat dissipation.
- ◆ Direct replacement for Metal Halide lamp, easy installation.
- ◆ Fits many different fixtures to replace traditional lamps.
- ◆ Operating ambient temperature can up to 122°F.

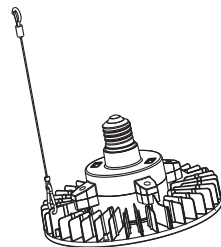
Installation Instructions:

Warning: Please make sure the power is off before installation.

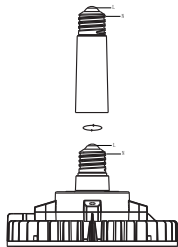
1. Turn off the power switch.
2. Unscrew the existing CFL, metal halide, or high pressure sodium bulb. See Figure 4 and 5.
3. Screw in the LED High Bay Retrofit Bulb after removing or disconnecting any ballast, capacitor or ignitor that may be present. See Figures 1, 4, and 5.
4. Attach the provided security rope to the LED High Bay Retrofit Bulb and a nearby structural support. See Figure 2.
5. If the provided adapter is used, screw it on the LED High Bay Retrofit Bulb as shown in Figure 3.
6. Bulb CCT and wattage can be adjusted. See Figure 6.
7. Turn on the power switch. (Installation is Finished.)



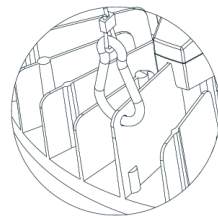
Figure(1)



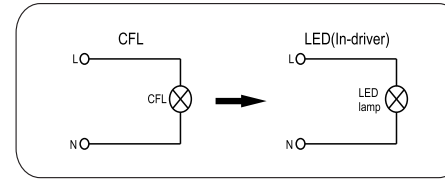
Figure(2)



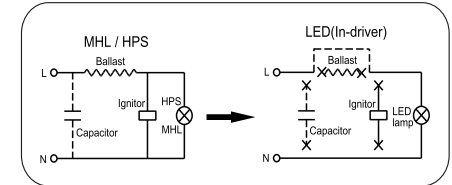
Figure(3)



Security Rope

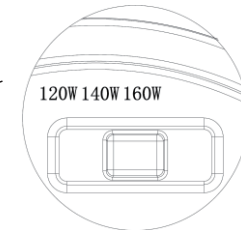
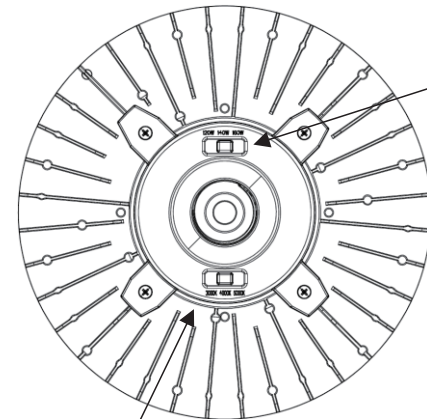


Figure(4)

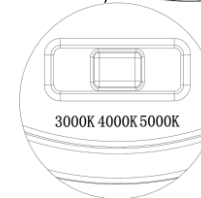


Figure(5)

CCT and wattage adjustable mode diagram (for reference when adjusting one or both modes)



WATTAGE SELECTION



CCT SWITCH

Maximum Rated Wattage	Wattage Selections
60W	60W 50W 40W
90W	90W 80W 70W
100W	100W 80W 60W
120W	120W 100W 80W
140W	140W 120W 100W
160W	160W 140W 120W

Figure(6)