

FEATURES & SPECIFICATIONS

INTENDED USE — Available in 2X2, 2X4, and 1X4 configurations, STACK Switch provides both functionality and efficiency. Selectable lumens allows for a variety of mounting heights and switchable color temperature allow you to fine tune the look of your space. The wide center basked and curved matte reflector allow STACK Switch to deliver a high quality of light while maintaining optimal performance.

• **Lumen and color switching make the STACK switch a distributors dream! Go from stocking 108 configurations to just Twelve!**

- 0-10V dimming to 10%
- Long-life LEDs deliver 80% lumen maintenance at 60,000 hours

The STACK Switch troffer delivers glare-free, ambient lighting in a popular center-basket design. The slim profile of the luminaire, coupled with energy-saving LED technology make the STACK Switch an ideal choice for renovation or new construction. The STACK Switch troffer offers a high-quality, cost-effective LED lighting solution for schools, offices, retail, healthcare facilities and other commercial spaces.

CONSTRUCTION — The reflector is finished with a glare reducing matte white paint for improved aesthetics and increased light diffusion. End plates contain easy-to-position integral T-bar clips to securely attach the luminaire to the T-grid. Diffusers are extruded from impact modified acrylic for increased durability. LED boards are accessible from the room-side and drivers are accessible from the plenum.

INSTALLATION — With a depth of only 1.9" for standard models and XX" for CP/EM models, the STACK Switch makes for an easy installation, especially in restrictive plenum applications. The STACK Switch fits into standard 15/16" and narrow 9/16" T-grid ceiling systems. Suitable for damp location.

ELECTRICAL — Long-life LED's, coupled with high-efficiency drivers provide superior quality of light and an extended service life. 80% LED lumen maintenance at 60,000 hours (L80/60,000). 0-10 volt dimming driver, dims to 10%.

Lumen and Color Switching: Integrated lumen and color switching module is easily accessible and mounted on the driver box on the back of the fixture. Simply adjust the toggle switch for low, medium, and high lumen and color settings.

OPTICS — Volumetric illumination is achieved by creating an optimal mix of light to walls, partitions and vertical and horizontal work surfaces – rendering the interior space, objects and occupants in a more balanced, complimentary luminous environment. A high performance acrylic diffuser conceals LED's and efficiently delivers light in a volumetric distribution.

LISTINGS — CSA certified to meet US and Canadian standards. Damp location listed. IC rated. DesignLights Consortium® (DLC) Premium qualified product and DLC qualified product. Not all versions of this product may be DLC Premium qualified or DLC qualified. Please check the DLC Qualified Products List at www.designlights.org/QPL to confirm which versions are qualified.

WARRANTY — 5-year limited warranty. This is the only warranty provided and no other statements in this specification sheet create any warranty of any kind. All other express and implied warranties are disclaimed. Complete warranty terms located at: www.acuitybrands.com/support/warranty/terms-and-conditions

Note: Actual performance may differ as a result of end-user environment and application. All values are design or typical values, measured under laboratory conditions at 25 °C. Specifications subject to change without notice.

Catalog Number
Notes
Type

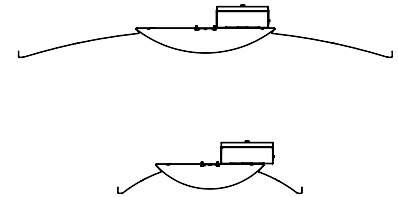
LED Center Element Lay-In

STACK SWITCH



Specifications

- Length 1X4: 47-3/4 (121.3)
- Width 1X4: 11-3/4
- Length 2X2: 23-3/4 (60.3)
- Width 2X2: 23-3/4 (60.3)
- Length 2X4: 47-3/4 (121.3)
- Width 2X4: 23-3/4 (60.3)
- Depth 1X4, 2X2, 2X4: 1.9 (4.8)
- Depth 1X4, 2x2, 2x4 CP: 3-3/8 (8.57)
- Depth 1X4, 2x2, 2x4 EM: 3-5/8 (9.2)



Note: Dimensions are fixture housing only. For additional information, see final page. All dimensions are inches (centimeters) unless otherwise specified.



Switchable Lumens



A+ Capable Luminaire

This item is an A+ capable luminaire, which has been designed and tested to provide consistent color appearance and out-of-the-box control compatibility with simple commissioning when used with Acuity Brands controls products.

All configurations of this luminaire are calibrated and tested to meet the Acuity Brands' specifications for chromatic consistency – including color rendering, color fidelity, and color temperature tolerance around standard CIE chromaticity coordinates.

To learn more about Acuity A+ standards, specifications, and testing visit www.acuitybrands.com/aplus.



Items marked by a shaded background qualify for the Design Select program and ship in 15 days or less. To learn more about Design Select, visit www.acuitybrands.com/designselect.

*See ordering tree for details

STACK SWITCH LED Center Element Lay-In



Design Select options indicated by this color background.



Looking for Contractor Select readily available configurations? Click here to visit Contractor Select™ spec sheet or go to www.contractorselect.com

ORDERING INFORMATION

Lead times will vary depending on options selected. Consult with your sales representative.

Example: STAKS 2X4 ALO6 SWW7 IE10WCP

Series	Size & Lumens	Switchable	Options
STAKS STAK Switchable	1X4 ALO6 Switchable Lumens - 4000LM, 5000LM, and 6000LM 2X2 ALO3 Switchable Lumens - 3000LM, 4000LM, and 5000LM 2X4 ALO6 Switchable Lumens - 4000LM, 5000LM, and 6000LM	SWW7 Switchable CCT - 35K, 40K, 50K	(BLANK) No Option * CP Chicago Plenum Rated * IE10WCP IE10WCP 10W Emergency backup, 10W * UVOLT 120-347 *

* Only one option may be selected, multiple options can not be combined

ACCESSORIES

Accessories: Order as separate catalog number.			
DGA14	Drywall grid adapter for 1x4 recessed fixture.	ELA PSRME IC	Remote enclosure for battery for insulated ceiling
DGA22	Drywall grid adapter for 2x2 recessed fixture.	*27005E RK8BDP 2P J40	Disconnect Plug (BDP) package of 40
DGA24	Drywall grid adapter for 2x4 recessed fixture.	*270055 RK8BDP 2P J10	Disconnect Plug (BDP) Package of 10
1X4SMKSHP PAF	Multi-Use Surface Mount Kit 1X4 Post-Paint	*270052 RK8BDP 2P U	Disconnect Plug (BDP) Unit Pack
2X2SMKSHP PAF	Multi-Use Surface Mount Kit 2X2 Post-Paint		
2X4SMKSHP PAF	Multi-Use Surface Mount Kit 2X4 Post-Paint		
ILB CP10 A	LED emergency battery pack, 10W 50VDC (Noncompliant with CA T20)		
ILBLP CP10 HE SD A	LED emergency battery pack, 10W Constant Power, Self-Diagnostic, Certified in CA Title 20 MAEDBS		

Stack configurations available on [Contractor Select](#):

STAKS 2x2 ALO3 SWW7

STAKS 2x4 ALO6 SWW7

STAKS 2x2 ALO3 SWW7 UVOLT

STAKS 2x2 ALO6 SWW7 UVOLT

STACK SWITCH LED Center Element Lay-In

STACK Switch
[WSXA D](#) and [SPODMA D](#) wall switches.



WSXA D



SPODMA D

PERFORMANCE DATA

SWITCHABLE TABLE *When adding an EM Battery Option, input wattage is increased by 2-4 Watts						
Size	Nomenclature	Lumen Package	CCT	Lumens	Wattage	Efficacy
1X4	STAKS 1X4 ALO6 SWW7	Low Lumens	35K	4212	31.18	135
			40K	4369	30.32	144
			50K	4251	31.26	136
		Medium Lumens	35K	5205	39.92	130
			40K	5413	38.54	140
			50K	5229	39.85	131
		High Lumens	35K	6034	48.15	125
			40K	6328	46.22	137
			50K	6077	48.57	125
2X2	STAKS 2X2 ALO3 SWW7	Low Lumens	35K	3561	26.92	132
			40K	3683	26.18	141
			50K	3583	27.01	133
		Medium Lumens	35K	4371	34.23	128
			40K	4563	33.13	138
			50K	4375	34.22	128
		High Lumens	35K	5035	40.92	123
			40K	5297	39.41	134
			50K	5053	40.99	123
2X4	STAKS 2X4 ALO6 SWW7	Low Lumens	35K	4325	31.5	137
			40K	4470	30.61	146
			50K	4369	31.6	138
		Medium Lumens	35K	5310	40.09	132
			40K	5517	38.71	143
			50K	5357	40.26	133
		High Lumens	35K	6170	48.51	127
			40K	6492	46.6	139
			50K	6228	48.39	129

Emergency Battery Delivered Lumens

Total delivered lumens will differ when in emergency power, this can be calculated by using the following formula

$$\text{Delivered Lumens} = 1.25 \times 10 \times \text{LPW}$$

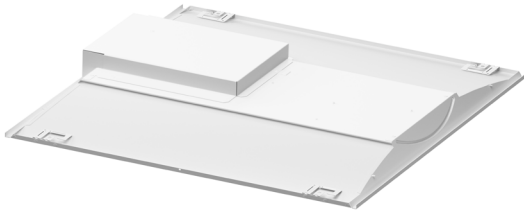
Lumens Per Watt (LPW) is calculated by Lumens / Wattage.

STACK SWITCH LED Center Element Lay-In



Standard Stack Switch Box

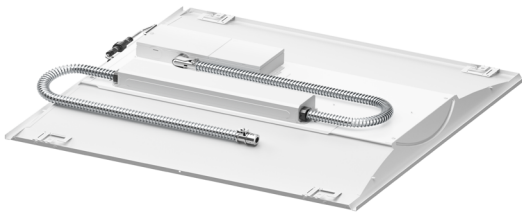
The Stack switch driver box is designed for versatile installation. It can be installed traditionally via mounting slots on the backside of the channel or can be remote mounted anywhere in the plenum. The IC rated driver box is connected to the fixture via a 12" long plenum rated cable, insuring flexibility during installation. If the driver is installed on backside of fixture, depth of fixture is 3.4"



Chicago Plenum Option



Chicago Plenum Wiring Access



Emergency Option



Chicago Plenum Cover Opening