



# Product Specification

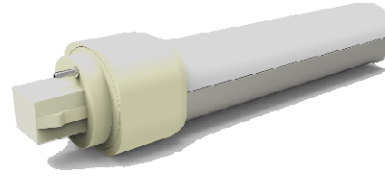
Document No.:

Version: A0

Page: 1/2

**model no. | PLT-50385, PLT-50386, PLT-50387, PLT-50388, PLT-50389****1. DESCRIPTION:**

LAMP TYPE:	PLED
LAMP CLASSIFIED:	Type B, Gen2
BASE TYPE:	GX23 or G24D (Two Pin-Base)
EQUIVALENT	Up to 18W
WATTAGE:	9W
CCT:	2700K,3000K,3500K,4000K, 5000K
DIFFUSER TYPE:	Glass
WARRANTY:	5 YEARS



Suitable for dry and damp locations  
 Suitable for open fixtures  
 Horizontal burn position only

**2. PRODUCT FEATURES**

Direct Replacement for conventional fluorescent lamp  
 UL Listed  
 270 degree rotatable cap  
 Environmentally friendly: no mercury

**3. PERFORMANCE (If no specified, the test conditions in below items are: Ta=25°C±1°C, RH≤65%, air free.)****3.1 Electrical Characteristics**

PARAMETERS	SYMBOL	MIN	RATED	MAX	UNIT	Test Condition
Rated Power per lamp (Bare)	Plamp	-10%	9.0	+10%	W	Vin=120,277Vac
Lamp voltage	Vlamp	--	120	--	V	/
Input voltage	U	108	120/277	305	V	/
Frequency	f	--	50/60	--	Hz	/
Power factor	PF	-3%	0.9	--	/	Vin=120,277Vac
Total Harmonic Distortion	THD	--	20%	+5%	/	Vin=120,277Vac
Starting time	t	--	--	2	s	Vin=120,277Vac
Flicker Percent	/	--	--	--	/	/
Dimming Type	/					

**3.2 Photometrical Characteristics**

PARAMETERS	SYMBOL	MIN	RATED	MAX	UNIT	Test Condition
Beam Angle	/	--	120	--	°	
Flux @2700K	Φ	-10%	900	--	LM	Vin=120,277Vac
Flux @3000K/3500K		-10%	950	--		
Flux @4000K/5000K		-10%	1000	--		
Lamp efficacy@2700K	ηlamp	-10%	100	--	LM/W	
Lamp efficacy@3000K/3500K		-10%	105	--		
Lamp efficacy@4000K/5000K		-10%	110	--		

**3.3 Color Characteristics (refer to ANSI C78.377-2017)****Chromaticity coordinates**

CENTER POINT	CCT=2700K	X=0.4578	Y=0.4101
	CCT=3000K	X=0.4338	Y=0.4030
	CCT=3500K	X=0.4073	Y=0.3917
	CCT=4000K	X=0.3818	Y=0.3797
	CCT=5000K	X=0.3447	Y=0.3553



# Product Specification

Document No.:

Version: A0

Page: 2/2

model no. **PLT-50385, PLT-50386, PLT-50387, PLT-50388, PLT-50389**

PARAMETER	SYMBOL	MIN	RATED	MAX	Unit	Test Condition
Color Render Index	Ra	80	82	--	/	/
R9	R9	0	12	--		
Color tolerance	/	--	--	5	SDCM	

## 4. LUMEN MAINTENANCE & LIFE

PARAMETERS	SYMBOL	MIN	RATED	MAX	UNIT	Test Condition
Lumen Maintenance at 6000hrs	/	--	95.8%	--	/	/
Life	t	--	50000	--	Hrs	Ta=45C, air free
Warranty	/	--	5	--	Year	Ta=45C, air free

## 5. OPERATION TEMPERATURE & STORAGE TEMPERATURE

PARAMETERS	SYMBOL	MIN	RATED	MAX	UNIT	Test Condition
Ambient Temperature	T <sub>A</sub>	-20	--	45	°C	/
Storage Temperature	T <sub>st</sub>	-40	--	85		/

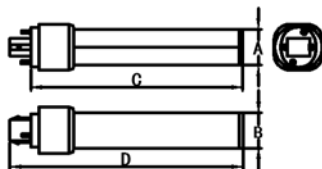
## 6. COMPATIBILITY

N/A

## 7. APPROBATION COMPLIANCE

UL1993, FCC part 18 no-consumer, RoHS compliance, NSF

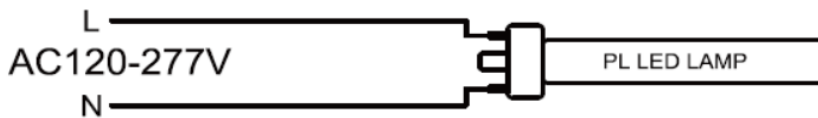
## 8. DIMENSIONS



SYMBOL	MIN	TYP	MAX	UNIT
A	26	--	28	mm
B	26	--	28	mm
C	152	--	154	mm
D	167	--	169	mm

## 9. Connection & Wiring

WIRING DIAGRAM	WIRING ILLUSTRATION
----------------	---------------------



## 10. SKUs

PLT-50385 - 9W, 900 Lumens, 100 LPW, 2700K, 13W CFL Equal  
 PLT-50386 - 9W, 950 Lumens, 106 LPW, 3000K, 13-18W CFL Equal  
 PLT-50387 - 9W, 950 Lumens, 106 LPW, 3500K, 13-18W CFL Equal  
 PLT-50388 - 9W, 1000 Lumens, 111 LPW, 4000K, 13-18W CFL Equal  
 PLT-50389 - 9W, 1000 Lumens, 111 LPW, 5000K, 13-18W CFL Equal