

## Skylark Contour LED+ Dimmer

Dimmer for dimmable LED, CFL, halogen, and incandescent bulbs.

### Features

- On / off rocker switch with a captive linear-slide dimmer for a standard designer wallplate opening.
- LED+ includes the most advanced technology for superior dimming of LED, CFL, halogen, and incandescent bulbs.
- UL Listed to control:
  - Dimmable LEDs
  - Dimmable compact fluorescent lamps (CFL) with integrated ballast
  - Lutron LTEA Hi-lume 1% forward-phase LED driver
  - Halogen
  - Incandescent
- Low-end adjustment to accommodate a wide range of bulbs.
- 100% factory tested.
- Formerly C•L.

### Application Requirements

- **When dimming LEDs or CFLs, only bulbs marked or rated as DIMMABLE may be used.**
- For a complete list of compatible DIMMABLE LEDs please visit [www.lutron.com/LEDfinder](http://www.lutron.com/LEDfinder)
- Some DIMMABLE LEDs and CFLs require a minimum number of bulbs for proper operation. For details and a list of bulbs, please visit [www.lutron.com/LEDfinder](http://www.lutron.com/LEDfinder)

### Model Number

CTCL-153P-XX<sup>1,2</sup> Single pole/3-way<sup>3</sup>

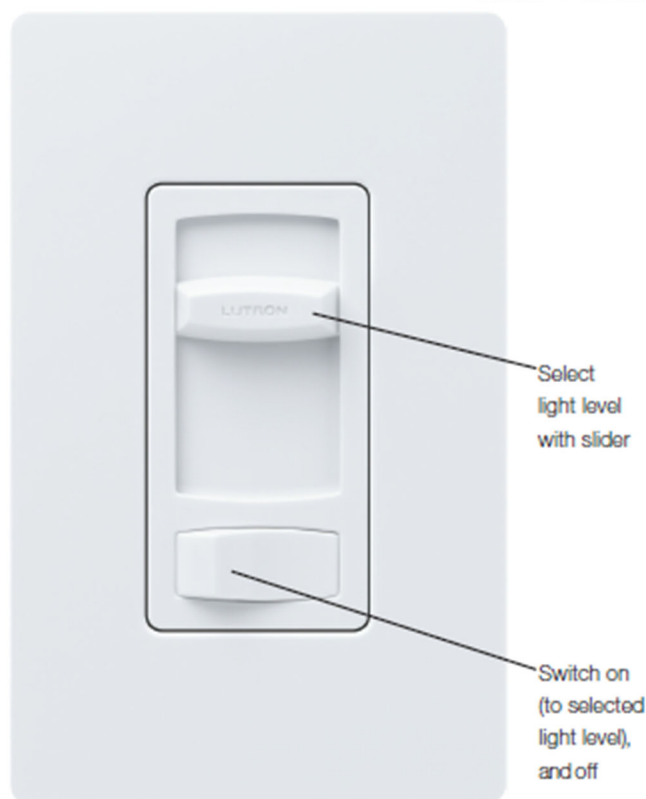
CTCL-153PH-XX-C<sup>4</sup> Single pole/3-way<sup>3</sup>

<sup>1</sup>"XX" in the model number represents color/finish code; see "Colors and Finishes" on next page.

<sup>2</sup>For clamshell packaging, add "H" after "153P".

<sup>3</sup>For 3-way and 4-way switching, use Claro switches or other mechanical switches.

<sup>4</sup>Clamshell packaged product for Canada.



\* Wallplate sold separately

## Specifications

### Regulatory Approvals

- UL Listed to US and Canadian safety requirements  
UL1472/CSA C22.2 184.1
- NOM

### Power and Ratings

- 120 V~ 60 Hz
- 150 W dimmable LED/CFL
- or
- 600 W incandescent/halogen
- or
- Mixed bulb type per **Multigang and Mixed Bulb Type Ratings** table (see page 3)
- or
- 250 W Lutron LTEA Hi-lume 1% forward-phase LED driver (max 6 drivers)

### Environment

- For indoor use only.
- Operating temperatures 32 °F to 104 °F (0 °C to 40 °C).

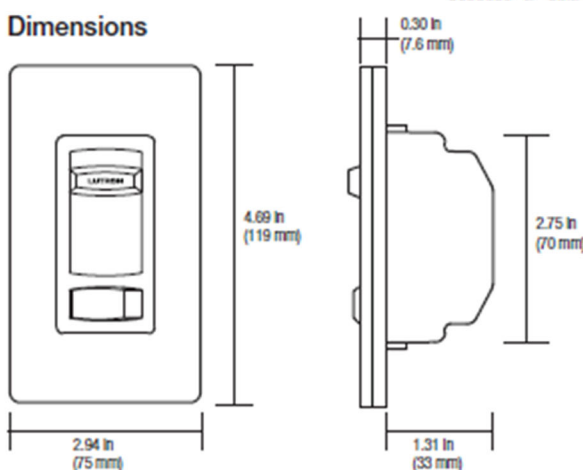
### Performance

- Power-failure memory
- Captive linear slider
- Electrostatic discharge tested
- Precise color matching
- Mechanical air-gap switch to disconnect load power

### Warranty

- 1 Year Limited Warranty  
For additional Warranty information, please visit  
[www.lutron.com/TechnicalDocumentLibrary/369-119\\_Wallbox\\_Warranty.pdf](http://www.lutron.com/TechnicalDocumentLibrary/369-119_Wallbox_Warranty.pdf)

### Dimensions



**Note:** Requires a U.S. wallbox 2½ in (64 mm) deep minimum.

### Colors and Finishes

#### Gloss Finishes

Add color/finish code to model #

**Example: CTCL-153P-WH**

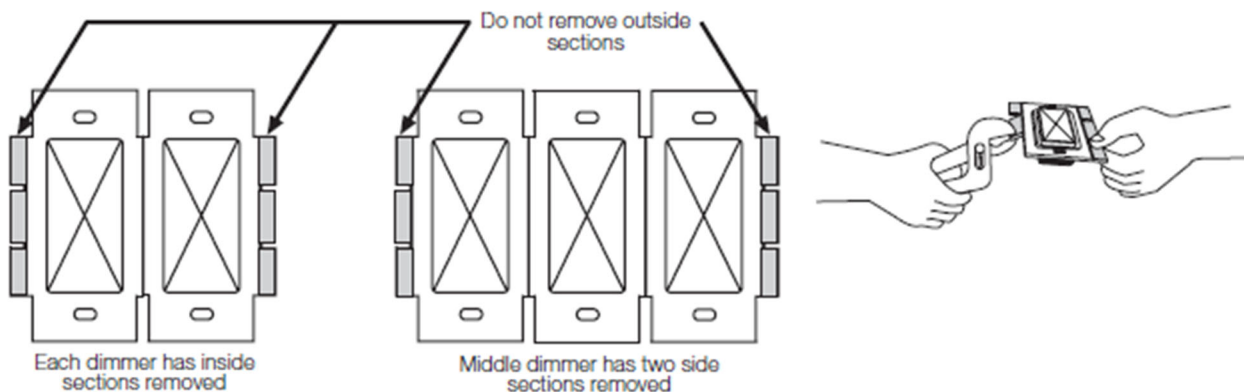
WH	White
IV	Ivory
AL	Almond
LA	Light Almond
GR	Gray
BR	Brown
BL	Black

## Multigang and Mixed-Bulb-Type Ratings

When installing more than one dimmer in the same wallbox, it may be necessary to remove some side sections prior to wiring (see diagram). Removal of dimmer side sections may reduce maximum wattage, as shown in the chart below.

Mixing bulb types (using a combination of LED/CFL, and incandescent/halogen bulbs) will also affect the maximum ratings, as shown in the chart below.

\*EXAMPLE: If one set of side sections is removed and you have three 10 W LED bulbs installed (Total LED Wattage = 30 W), you may add up to 300 W of incandescent or halogen lighting.



Total LED/CFL Wattage Installed (Wattage per bulb x # of bulbs)	LED CFL	Maximum Allowable Incandescent/Halogen Wattage		
		No sides removed	1 side removed	2 sides removed
0 W	+	600 W	500 W	400 W
1 W – 25 W	+	500 W	400 W	300 W
26 W – 50 W	+	400 W	300 W	200 W
51 W – 75 W	+	300 W	200 W	100 W
76 W – 100 W	+	200 W	100 W	50 W
101 W – 125 W	+	100 W	50 W	0 W
126 W – 150 W	+	0 W	0 W	0 W

## Operation (View with wallplate removed)



**1** Switch  
Turns lights ON and OFF.

**2** Slider  
Controls light level.  
+ Up  
Increases light level  
- Down  
Decreases light level  
**IMPORTANT:** Set slider to bottom before adjusting dimming range.

## Lever-type Adjustment Dial

**3** Adjustment lever  
Sets low end dimming limit.  
Up (clockwise)  
Increases brightness  
+  
-  
Down (counter-clockwise)  
Decreases brightness

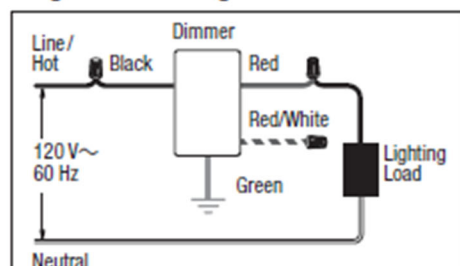
OR

## Wheel-type Adjustment Dial

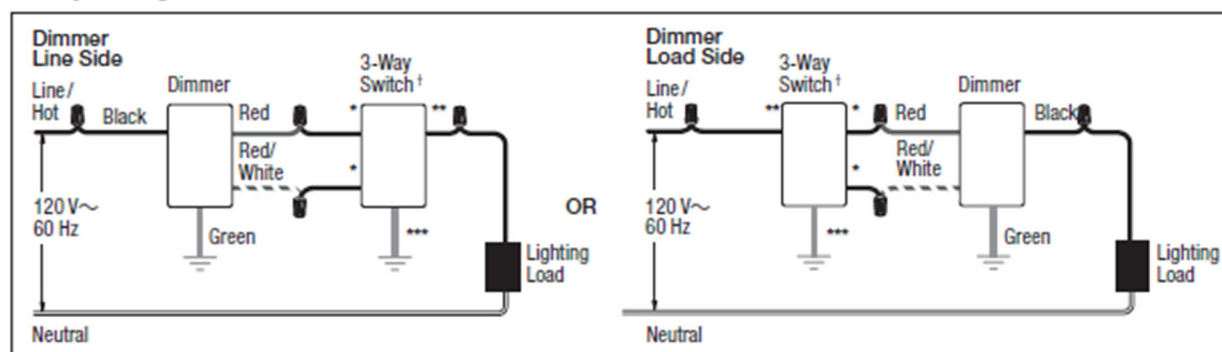
**3** Adjustment dial  
Sets low end dimming limit.  
Up (clockwise)  
Decreases brightness  
-  
+  
Down (counter-clockwise)  
Increases brightness

## Wiring Diagrams

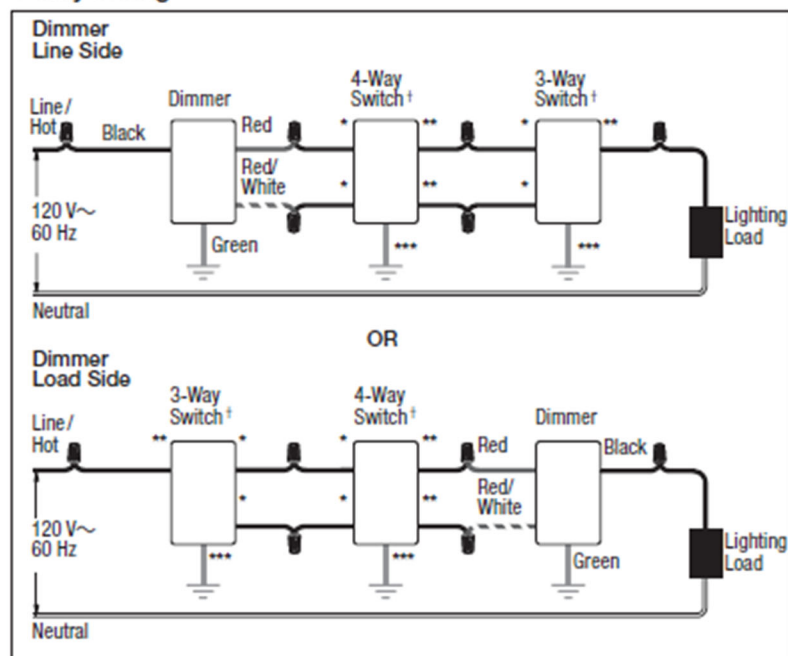
### Single-Pole Wiring



### 3-Way Wiring



### 4-Way Wiring



- \* Brass/Gold screw terminal
- \*\* Copper/Black screw terminal
- \*\*\* Green screw terminal
- † Please refer to the switch's instruction sheet for proper wiring.

#### Note for 4-Way Wiring:

Dimmer must be installed Line Side or Load Side. It cannot be installed in the 4-way location.

The Lutron logo, Lutron, Skylark Countour, Hi-lume, LED+, C•L, and Claro are trademarks or registered trademarks of Lutron Electronics Co., Inc. in the US and/or other countries. All other product names, logos, and brands are property of their respective owners.

## NEMA SSL 7A Dimmer Compliance List Including Compliance With CA Title 24

NEMA (National Electrical Manufacturers Association) SSL 7A is a standard that provides basic requirements for phase-cut dimming of LED light sources. Please note that SSL 7A defines only basic dimming criteria. To ensure the lamp and dimmer are compatible with Lutron performance and quality standards, use the tool at [www.lutron.com/compatibility](http://www.lutron.com/compatibility) or visit [www.lutron.com/leds](http://www.lutron.com/leds) to find detailed report cards for LED lamps.

Effective January 1 2017, new residential construction and major renovation in California is required to meet CA Title 24 2016 Building Energy Efficiency Standards Section 150.0(k)2A. This requirement states that all forward-phase-cut dimmers controlling interior LED lamps must comply with NEMA SSL 7A. This document contains the list of Lutron dimmers that are compliant with this Title 24 requirement.

This document is only applicable to phase control dimming and does not apply to sensors or other dimming technologies (e.g., 0–10 V<sub>DC</sub> or EcoSystem). If a product is not on the list, contact Customer Assistance at [www.lutron.com/support](http://www.lutron.com/support) or 1.844.LUTRON1.

Product Family	Model Number	Description	Notes
Wallbox dimmers	DVCL-153P	Diva LED+ dimmer	-
	CTCL-153P	Skylark Contour LED+ dimmer	-
	TGCL-153P	Toggler LED+ dimmer	-
	SCL-153P	Skylark LED+ dimmer	-
	LECL-153P	Lumea LED+ dimmer	-
	LECL-150	Lumea LED+ dimmer	-
	AYCL-153P	Ariadni LED+ dimmer	-
	DVCL-253P	Diva LED+ 250 W dimmer	-
	AYCL-253P	Ariadni LED+ 250 W dimmer	-
	NTCL-250	Nova T <sub>2</sub> LED+ dimmer	-
	CTCL-150	Skylark Contour LED+ dimmer	-
	GT-150	GRAFIK T LED+ dimmer	-
	GT-250M	GRAFIK T LED+ 250 W dimmer	-
	GT-5NEM	GRAFIK T phase-selectable dimmer	Compliant when set to forward-phase mode.
	MA-PRO	Mastro LED+ PRO Dimmer	Compliant when set to forward-phase mode.
	MACL-LFQ	Maestro LED+ Fan/Light Dimmer	-
	MACL-153M	Maestro LED+ dimmer	To help determine if the product is compliant with Title 24, refer to the <b>MACL-153M Compliant vs. Non-Compliant Examples</b> section on page 3.
RadioRA 2	RRD-HN	seeTouch hybrid keypad	-
	RRD-6NA*	Maestro phase-adaptive dimmer	Compliant when set to forward-phase mode.
	RRT-G5NEW	GRAFIK T phase-selectable dimmer	Compliant when set to forward-phase mode.
	RRD-3LD	Tabletop lamp dimmer	-
	RRD-3PD	Plug-in lamp dimmer	-
	RRD-6CL	RadioRA 2 LED+ Dimmer	Compliant with 2 or more LED lamps.
	RRD-10ND	Maestro neutral wire dimmer	Compliant with up to 125 W LED load.
	RRD-PRO	Maestro LED+ dimmer	Compliant when set to forward-phase mode. Neutral connected: 1 or more LED lamps. No neutral connection: 2 or more LED lamps.
	RRT-GH	GRAFIK T hybrid keypad	Compliant with neutral wire connected.
	RRT-G25LW	GRAFIK T dimmer	Compliant with 2 or more LED lamps.

\* Title 24 requires phase adaptive dimmers to be SSL 7A compliant only when operating in the forward-phase mode.

Continued on next page...



Product Family	Model Number	Description	Notes
HomeWorks	HQRD-6NA*	Maestro phase-adaptive dimmer	Compliant when set to forward-phase mode.
	LQSE-4A-120-D*	Phase-adaptive power module	Compliant with up to 100 W LED load when set to forward phase mode. Low-end trim must be set to 10%.
	LQSE-4A5-120-D*	LED+ phase-adaptive power module	Compliant with up to 400 W LED load on Zone 1, and up to 200 W LED load on Zone 2, Zone 3, and Zone 4. Must be set to forward phase mode and Low-end trim set to 10%.
	LQSE-4A1-D*	Phase-adaptive power module	Compliant with up to 70 W LED load when set to forward phase mode. Low-end trim must be set to 10%.
	MQSE-4A1-D*	myRoom phase-adaptive power module	Compliant with up to 70 W LED load when set to forward phase mode. Low-end trim must be set to 10%.
	HQRD-HN	seeTouch hybrid keypad	-
	HQRT-G5NEW	GRAFIK T phase-selectable dimmer	Compliant when set to forward-phase mode.
	HQRD-6ND	Maestro neutral wire dimmer	Compliant with up to 125 W LED load.
	HQRD-6CL	HomeWorks QS RF LED+ Dimmer	Compliant with 2 or more LED lamps.
	HQRD-10ND	Maestro neutral wire dimmer	Compliant with up to 125 W LED load.
	HQRA-PRO	Maestro LED+ dimmer	Compliant when set to forward-phase mode. Neutral connected: 1 or more LED lamps. No neutral connection: 2 or more LED lamps.
	HQRD-PRO	Maestro LED+ dimmer	Compliant when set to forward-phase mode. Neutral connected: 1 or more LED lamps. No neutral connection: 2 or more LED lamps.
	QSGRJ-6P	GRAFIK Eye control unit	Compliant with 3 or more LED lamps.
	HQRT-G25LW	GRAFIK T dimmer	Compliant with 2 or more LED lamps.
	HQRT-GH	GRAFIK T hybrid keypad	Compliant with neutral wire connected.
	HQR-3LD	Tabletop lamp dimmer	-
	HQR-3PD	Plug-in lamp dimmer	-
	HW-RPM-4A*	Phase-adaptive module	Compliant with up to 300 W LED load and when set to forward phase mode. Low-end trim must be set to 10%.
	HW-RPM-4U	Forward-phase module	To help determine if your product is compliant with Title 24, refer to the <b>HW-RPM-4U Compliant vs. Non-Compliant Examples</b> section on page 4.
Wireless dimmers for use with Pico wireless controls and wireless sensors	GTJ-150	GRAFIK T wireless dimmer	Compliant with 2 or more LED lamps.
	GTJ-250M	GRAFIK T wireless dimmer	Compliant with 2 or more LED lamps.
	GTJ-5NEM	GRAFIK T wireless phase selectable	Compliant when set to forward-phase mode.
	MRF2-3LD	Maestro Wireless tabletop lamp dimmer	-
	MRF2-3PD	Maestro Wireless plug-in lamp dimmer	-
	MRF2-6ND	Maestro Wireless neutral wire dimmer	Compliant with up to 125 W LED load.
Caséta Wireless	PD-6WCL	Caséta original smart dimmer	-
	PD-10NXD	Caséta original PRO smart dimmer	-
	PD-5NE	Caséta smart ELV+ dimmer	Compliant when set to forward-phase mode.
	PD-3PCL	Caséta plug-in dimmer	-
	DVRF-6L	Diva smart dimmer	Compliant with up to 50 W LED load and when set to forward-phase mode.
	DVRF-5NE	Diva smart ELV+ dimmer	Compliant when set to forward-phase mode.
Panels	RET-GPDIMMER	Retrofit GP card	-
	PHPM-PA*	Phase-adaptive power booster	-
	PHPM-WBX*	Phase-adaptive power booster	-
	QSN-4A5-S*	Energi Savr Node LED+ phase-adaptive fixture controller	Compliant with up to 400 W LED load on Zone 1, and up to 200 W LED load on Zone 2, Zone 3, and Zone 4. Must be set to forward-phase mode and low-end trim set to 10%.
	QSN-4A5-D*	Energi Savr Node LED+ phase-adaptive power module	
Vive	RMJS-PNE-DV* RMJS-PNE-DV-EM*	Vive PowPak-phase select dimming module	Complies with NEMA SSL 7A-2015 when configured to LED forward-phase with low-end trim set to 12% and high-end trim set to 90%.

\* Title 24 requires phase adaptive dimmers to be SSL 7A compliant only when operating in the forward-phase mode.

## MACL-153M Compliant vs. Non-Compliant Examples



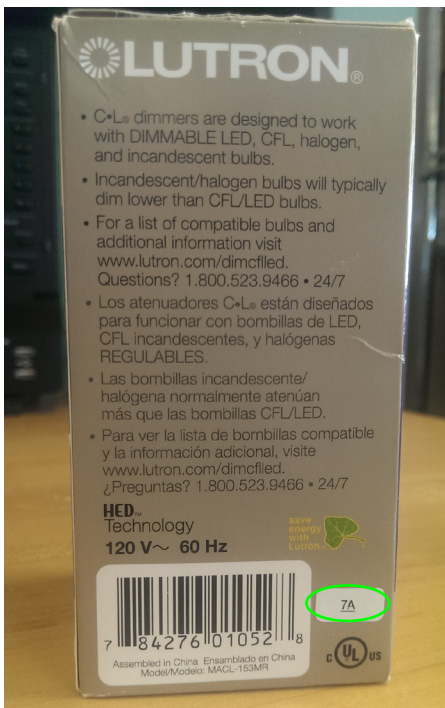
Compliant



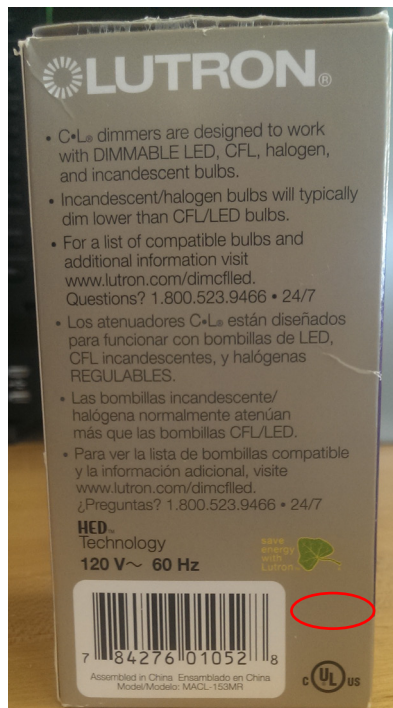
Non-compliant

- 5 digit code = Compliant
- 3 digit code = Non-compliant

## Retail Box



Compliant



Non-compliant

- 7A listed = Compliant
- No listing = Non-compliant

Continued on next page...



## MACL-153M Compliant vs Non-Compliant Examples (continued)

### Electrical Distributor Box



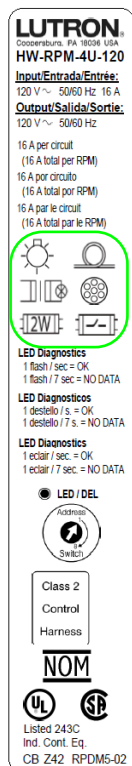
Compliant



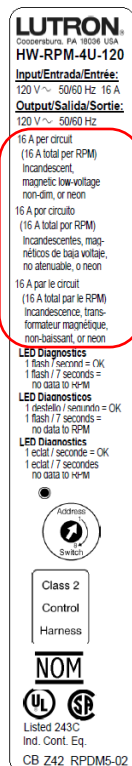
Non-compliant

**7A listed = Compliant**  
**No listing = Non-compliant**

## HW-RPM-4U Compliant vs. Non-Compliant Examples



Compliant



Non-compliant

**7A listed = Compliant**  
**No listing = Non-compliant**

For more information, visit [www.lutron.com/title24](http://www.lutron.com/title24)

### Lutron Energy Code Resources

Energy Code Lookup Tool .....	<a href="http://www.lutron.com/energycodes">www.lutron.com/energycodes</a>
Energy Code Application Guides .....	<a href="http://www.lutron.com/appguides">www.lutron.com/appguides</a>
Rebate Lookup Tool .....	<a href="http://www.lutron.com/rebates">www.lutron.com/rebates</a>
24/7 Energy Code Hotline .....	1THINKCODE0 (1.844.652.6330)
Energy Codes Email. ....	<a href="mailto:energycodes@lutron.com">energycodes@lutron.com</a>

The Lutron logo, Lutron, Caséta, EcoSystem, Energi Savr Node, GRAFIK T, LED+, myRoom, RadioRA 2, Skylark Contour, Toggler, C•L, HomeWorks, Maestro Wireless, seeTouch, Maestro, GRAFIK Eye, Diva, Pico, Ariadni, Skylark, Lumea, Nova T★, LED+, PowPak, Vive, and RadioRA are trademarks or registered trademarks of Lutron Electronics Co., Inc. in the US and/or other countries.

All other product names, logos, and brands are property of their respective owners.

---

### **Lutron Contact Numbers**

#### **WORLD HEADQUARTERS USA**

**Lutron Electronics Co., Inc.**  
**7200 Suter Road**  
**Coopersburg, PA 18036-1299**  
TEL: +1.610.282.3800  
FAX: +1.610.282.1243  
[support@lutron.com](mailto:support@lutron.com)  
[www.lutron.com/support](http://www.lutron.com/support)

#### **North & South America Customer Assistance**

**USA, Canada, Caribbean:**  
1.844.LUTRON1 (1.844.588.7661)  
**Mexico:**  
+1.888.235.2910  
**Central/South America:**  
+1.610.282.6701

#### **UNITED KINGDOM:**

**Lutron EA Limited**  
**51 Lime Street, 3rd Floor**  
**London EC3M 7DQ**  
**United Kingdom**  
TEL: +44.(0)20.7702.0657  
FAX: +44.(0)20.7480.6899  
FREEPHONE (UK): 0800.282.107  
Technical Support: +44.(0)20.7680.4481  
[lutronlondon@lutron.com](mailto:lutronlondon@lutron.com)

#### **ASIA:**

**Lutron GL Ltd.**  
**390 Havelock Road**  
**#07-04 King's Centre**  
**Singapore 169662**  
TEL: +65.6220.4666  
FAX: +65.6220.4333  
Technical Support: 800.120.4491  
[lutronsea@lutron.com](mailto:lutronsea@lutron.com)

#### **Asia Technical Hotlines**

Northern China: 10.800.712.1536  
Southern China: 10.800.120.1536  
Hong Kong: 800.901.849  
Indonesia: 001.803.011.3994  
Japan: +81.3.5575.8411  
Macau: 0800.401  
Taiwan: 00.801.137.737  
Thailand: 001.800.120.665853  
Other Countries: +65.6220.4666