



Catalog Number
Notes
Type

Contractor Select™

BE

Basics Edge-Lit Exit Sign

The Basics™ Edge-lit Exit Sign from Lithonia Lighting provides a high-end aesthetic while remaining budget friendly. Available in two versions, a surface mount and universal mount version, making it simple to choose the right exit sign for the space. The exit panel rotates 0-180° to fit any mounting orientation and offers an internal switch for AC or Battery Back-Up (EL) for added flexibility. The Basics Edge-lit sign is perfect for applications such as schools, hospitals, office spaces, strip malls and multi-family.

FEATURES:

- High-End Aesthetic: 8mm thick mirrored acrylic light guide plate provides excellent uniformity and crystal-clear illumination.
- Economical: The Surface Mount (SM) version allows for ceiling, wall or end mounting while remaining budget friendly.
- Versatile: The Universal Mount (UM) version provides both surface and recessed mounting capability in one box.
- Ease of Ordering: The AC/Battery Back-Up (EL) internal switch takes the guess work out of which option to choose for the application.

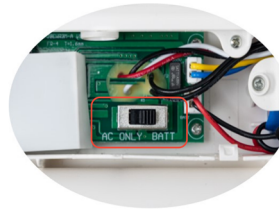


Surface Mount (SM)



Universal Mount (UM)

AC or Battery Back-up (EL) Internal Switch



CERTIFIED AT
TITLE 20
Exit Signs Certified in the CA Title 20 Appliance Efficiency Database.



Catalog Number	UPC	Description	Letter Color	Supply Voltage	Wattage	Operation	Mounting	Pallet Qty
BE W R SM M6	00197589464993	3 Face - Mirrored Backing, Removable Chevrons, 0-180° swivel	Red	MVOLT, 120-277V, 50/60Hz	3.6W	AC or EL Selectable (internal switch)	Surface Mount only	162
BE W G SM M6	00197589464894	3 Face - Mirrored Backing, Removable Chevrons, 0-180° swivel	Green	MVOLT, 120-277V, 50/60Hz	3.6W	AC or EL Selectable (internal switch)	Surface Mount only	162
BE W R UM M2	00197589465143	3 Face - Mirrored Backing, Removable Chevrons, 0-180° swivel	Red	MVOLT, 120-277V, 50/60Hz	3.6W	AC or EL Selectable (internal switch)	Surface or Recessed Mount Capable	48
BE W G UM M2	00197589465013	3 Face - Mirrored Backing, Removable Chevrons, 0-180° swivel	Green	MVOLT, 120-277V, 50/60Hz	3.6W	AC or EL Selectable (internal switch)	Surface or Recessed Mount Capable	48

Accessories: Order as separate catalog number.
ELA LQMUS12 Stem kit, brushed aluminum with white canopy¹

NOTES
1 See spec sheet ELA-Stemkits. Only available for surface mount. Not available for recessed mount.



Rotate angle from 0° to 180°
Sloped Mount



Wall Mount



End Mount



Specifications

INTENDED USE:

Great for applications requiring an attractive edge-lit exit sign while remaining budget friendly.

CONSTRUCTION:

Engineering-grade thermoplastic housing is impact-resistant, scratch-resistant, and corrosion-proof.

UL94V-0 flame rating. UV-stable resin resists discoloration from natural and man-made light sources.

Letters 6" high with 3/4" stroke, with 100 ft viewing distance rating, based upon UL924 standards.

OPTICS:

8mm thick mirrored acrylic panel provides uniform illumination without shadows or hot spots.

LEDs operate in normal (AC input) and emergency (battery back-up) mode for a minimum of 90 minutes.

The typical life of the exit sign LEDs is >5 years, based on 24/7 operation.

ELECTRICAL:

Multi-volt, 120-277VAC, 50/60hz.

AC or Battery Back-up (EL). Using an internal switch, the end user has the ability to select between normal power (AC) or battery back up (EL) operation depending on the application (**Patent Pending**).

Sign ships standard in AC mode. Sign ships with battery included.

3.6V, 1000mAh NiCad Battery

INSTALLATION:

Surface Mount Version (SM):

Provides ceiling, wall and end mounting capability.

0-180° swivel mounting capability for standard or sloped ceilings.

3 Face standard - ships as a double sided exit with a backplate. Allows capability to turn a double sided exit to a single face exit.

Ships standard with removable directional chevrons. These can be removed in the field depending on the application.

Universal Mount Version (UM):

Provides ceiling, wall and end mounting capability, as well as, recessed mount capability all in one box.

Recessed mounting kit can be mounted from 15" to 18.5" max.

0-180° swivel mounting capability for standard or sloped ceilings.

3 Face standard - ships as a double sided exit with a backplate. Allows capability to turn a double sided exit to a single face exit.

Ships standard with removable directional chevrons. These can be removed in the field depending on the application.

LISTINGS:

UL damp location listed 32-104°F (0-40°C) standard. Meets UL924, NFPA 101 (current Life Safety Code), NEC and OSHA illumination standards. Meets all applicable FCC Title 47, Part 15, Subpart B, California Energy Commission Title 20 section 1605.3 (W)(4).

WARRANTY:

2-year limited warranty. This is the only warranty provided and no other statements in this specification sheet create any warranty of any kind. All other express and implied warranties are disclaimed. Complete warranty terms located at: www.acuitybrands.com/support/warranty/terms-and-conditions

Note: Actual performance may differ as a result of end-user environment and application. All values are design or typical values, measured under laboratory conditions at 25 °C. Specifications subject to change without notice.

Dimensions

Surface Mount

Shipping Weight: 2.43 lb (1.1 kgs)

Top Mount

Length: 12.13"

Width: 4.28"*

Height: 10.53"

*Width based on surface mounting plate

Wall Mount

Length: 12.13"

Width: 3.63"

Height: 9.63"

End Mount

Length: 12.77"

Width: 4.28"*

Height: 11.63"

*Width based on surface mounting plate

Recessed Mount

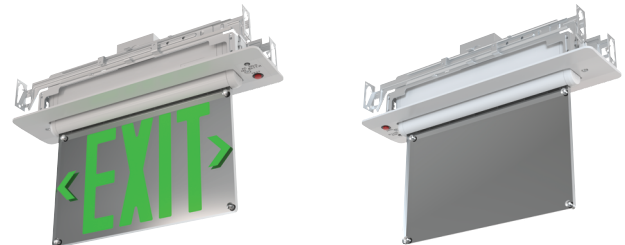
Shipping Weight: 4.19 lbs (1.9 kgs)

Length: 15.98"*

Width: 3.94"

Height: 7.91"

*Length is based on trim plate



Easily convert double face sign into single face sign by attaching backplate (included) to sign.

